

EMERALD LAKES PHASE I - B

BEING A REPLAT OF A PORTION OF EMERALD LAKES AS RECORDED IN PLAT BOOK 9, PAGE 22 OF THE PUBLIC RECORDS MARTIN COUNTY, FLORIDA.

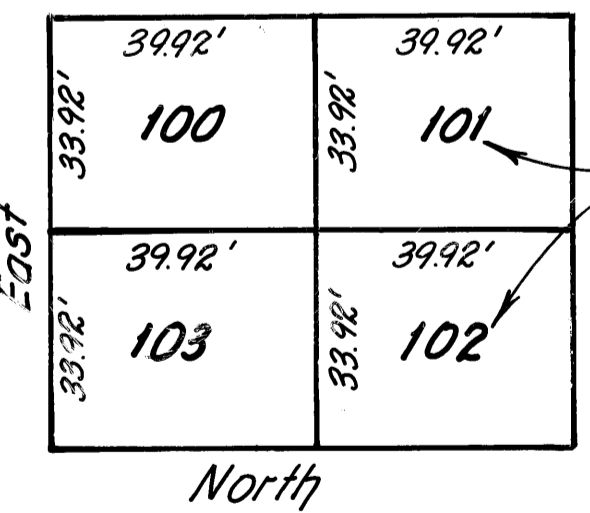
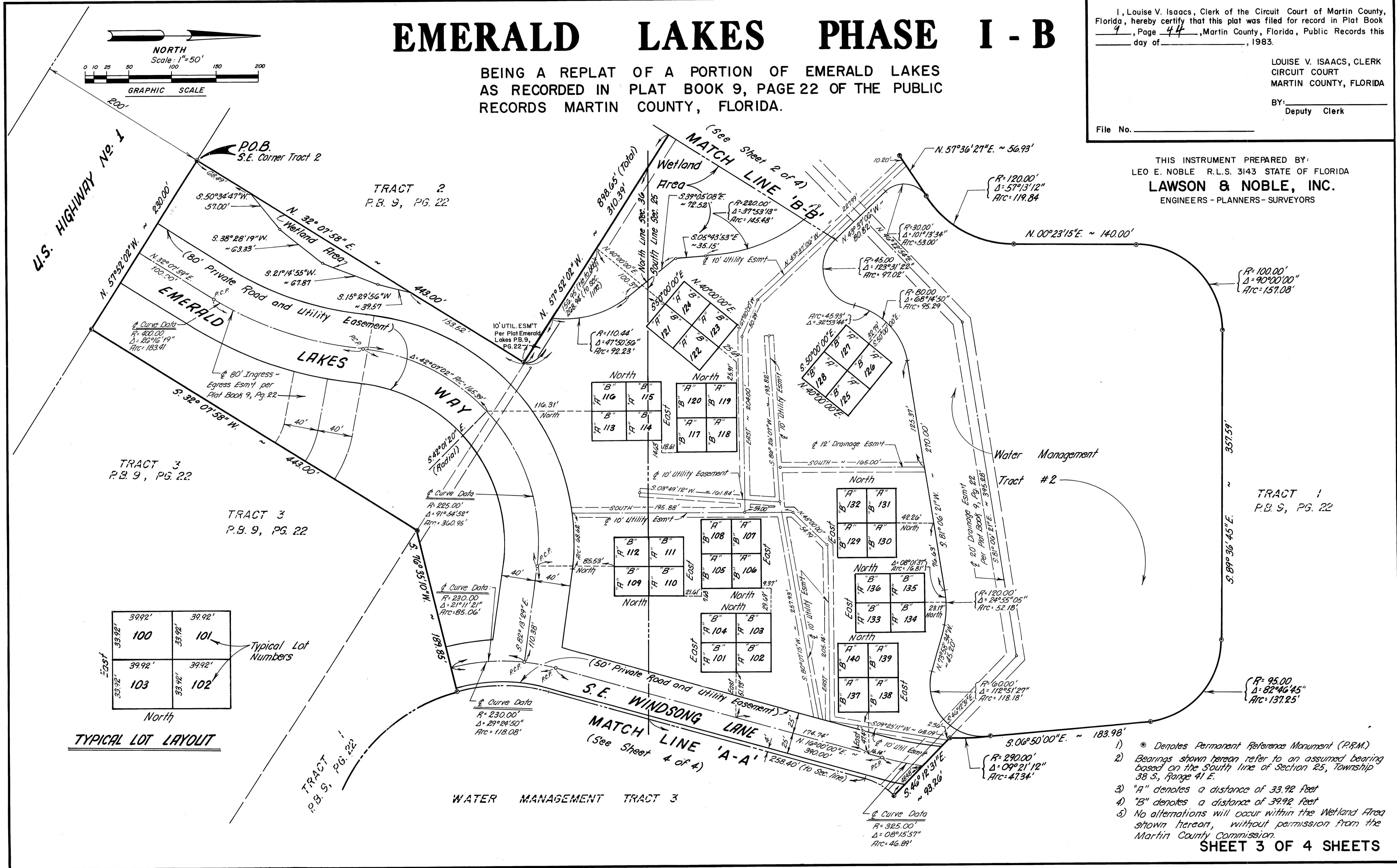
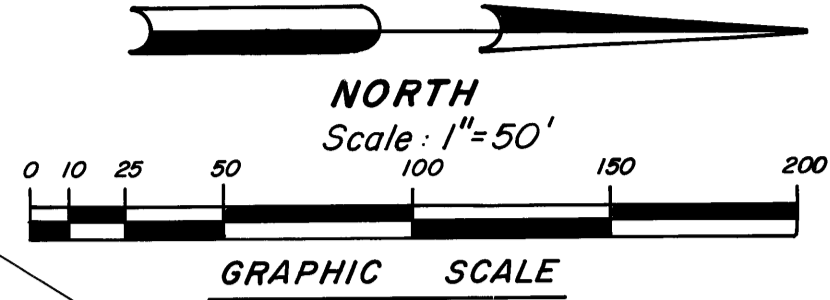
I, Louise V. Isaacs, Clerk of the Circuit Court of Martin County, Florida, hereby certify that this plat was filed for record in Plat Book 9, Page 44, Martin County, Florida, Public Records this day of _____, 1983.

LOUISE V. ISAACS, CLERK
CIRCUIT COURT
MARTIN COUNTY, FLORIDA

BY: _____
Deputy Clerk

File No. _____

THIS INSTRUMENT PREPARED BY:
LEO E. NOBLE R.L.S. 3143 STATE OF FLORIDA
LAWSON & NOBLE, INC.
ENGINEERS - PLANNERS - SURVEYORS



TYPICAL LOT LAYOUT

Typical Lot Numbers

- 1) \odot Denotes Permanent Reference Monument (P.R.M.)
- 2) Bearings shown hereon refer to an assumed bearing based on the South line of Section 25, Township 38 S., Range 41 E.
- 3) "A" denotes a distance of 33.92 feet
- 4) "B" denotes a distance of 39.92 feet
- 5) No alterations will occur within the Wetland Area shown hereon, without permission from the Martin County Commission.